

DEBLOCKING MECHANISM Promix-AD.KM.01

OPERATING MANUAL

Technical description. Installation manual. Certificate.

ПШБА.304269.201 PЭ

1. PURPOSE

The deblocking mechanism Promix-AD.KM.01 is intended for deblocking Promix-SM203 electromechanical lock from the outside using a key or from the inside using a rotating handle. The mechanism is used in the case the lock is installed in the door frame.

2. LABELING

The label stuck to the lock body contains the following information:

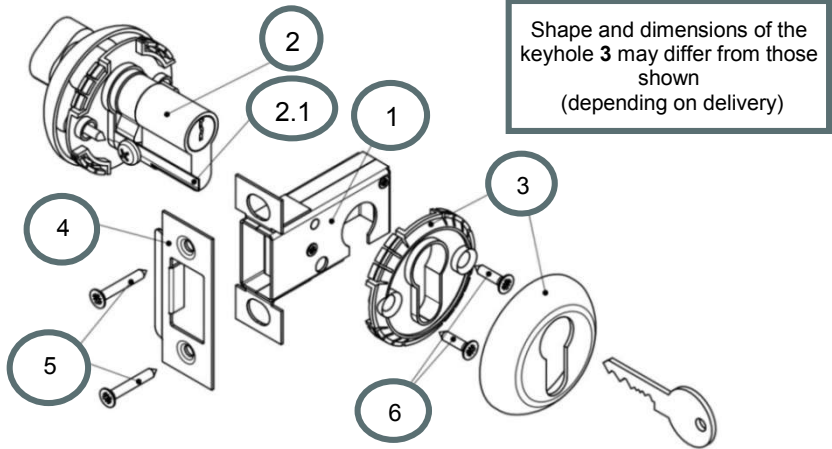
1. Product model.
2. Date of manufacture and QCD mark.
3. Identification number.
4. Manufacturer's website.



An example of information layout on the label.

3. SET OF DELIVERY

1 – Deblocking mechanism, assembled	1 pc.	5 – Self-tapping screw 3.5x32 (countersunk) (not included in the set of delivery, delivered together with the lock Promix-SM203)	-
2 – Cylinder mechanism 60mm (with keys)	1 pc.	6 – Self-tapping screw 3.5x16 (countersunk) (or fasteners from the set of delivery of the keyhole)	4 pcs.
2,1 – Plate	1 pc.	7 – Marking template	1 pc.
3 – Keyhole (set)	2 pcs.	8 – Operating manual	1 pc.
4 - Locking plate (not included in the set of delivery, delivered together with the lock Promix-SM203)	-		

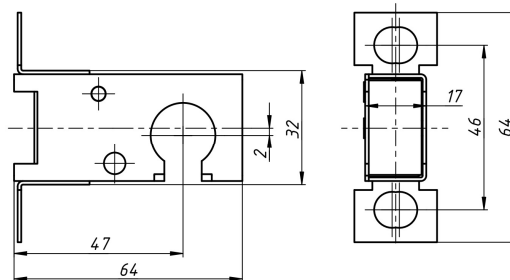


Check completeness of the lock set when buying! After buying, the manufacturer will not accept claims related to incomplete set.

4. DESIGN AND PRINCIPLE OF OPERATION

The deblocking mechanism Promix-AD.KM.01 is an independent device and makes it possible to open mechanically the electromechanical lock Promix-SM203 of any version in case of a power source failure. The mechanism is a necessary supplement in use of normally closed Promix-SM203 plants for restriction of access to rooms where people are present continuously.

The mechanism is designed to be mounted on a 40-mm thick door leaf at the place of the locking plate from the lock delivery set, and provides normal operation of the Promix-SM203 lock controlled by supply voltage. To open the lock mechanically (regardless of the lock version, availability of supply voltage and serviceability of the lock mechanism), it is necessary to rotate the key (from the outside) or the rotatable handle (from the inside) to the stop and to pull the door.



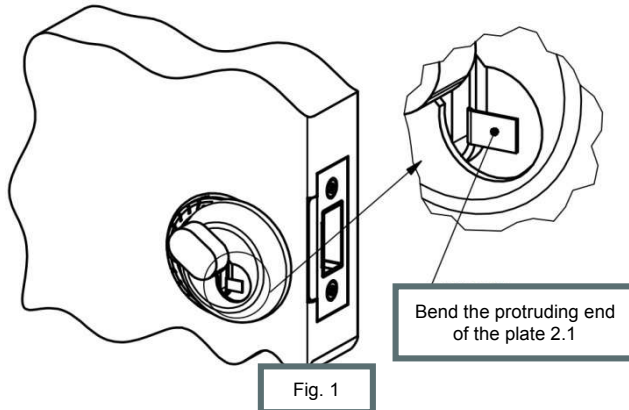
5. OPERATING CONDITIONS

Climatic operating conditions as per GOST 15150-69:УХЛ2.

- ambient temperature: from -40 to +50 °C;
- relative air humidity: not higher than 95% at 35°C or lower temperatures without moisture condensation and hoar-frost formation;
- installation indoors or outdoors excluding ingress of moisture, dust, dirt, etc. inside the lock.

6. INSTALLATION OF THE MECHANISM

1. Install the electromechanical lock Promix-SM203 in the door frame and mark the locking plate mounting place in the Operating manual for the lock.
2. Place the marking template **7** in coincidence with the place of fastening the locking plate **4** and the edge of the door leaf. Mark the place for the cylinder mechanism **2** on the door leaf.
3. Make a rectangular opening 18x33mm in the end of the door leaf for the deblocking mechanism **1**.
4. At the place of the door leaf marked in item 2, make an opening for the cylinder mechanism.
5. In the door leaf end, make a 2-mm recess of a shape corresponding to that of the locking plate **4**. Insert the deblocking mechanism **1** in the door leaf, and insert the cylinder mechanism **2** in the inner side of the door leaf.
6. Fit the locking plate **4** over the deblocking mechanism **1**. Fix the locking plate with self-tapping screws **5**.
7. Using self-tapping screws **6**, fix the plastic part of the keyhole **3** fitted over the cylinder mechanism **2** (to do this, it is necessary to turn the metal part of the keyhole **3** in side directions).
8. Align the cylinder mechanism **2** inside the door leaf and check its operation.
9. Bend the protruding end of the plate **2.1** (see Fig.1).



10. Snap the metal part of the keyhole **3** on its plastic part.
11. Fix the plastic part of the keyhole **3** with self-tapping screws **6** on the other side of the door, bend the protruding end of the plate **2.1**. Snap the metal part of the keyhole **3**.
12. After installation, test the joint operation of the lock Promix-SM203 and the lock deblocking mechanism Promix-AD.KM.01.

7. MAINTENANCE

The mechanism Promix-AD.KM.01 does not need lubrication or any special maintenance. However, if dust or dirt penetrated inside the mechanism, which led to its malfunctioning, take the mechanism from the door, wash carefully, dry and make sure that its operability has restored.

8. STORAGE AND TRANSPORTATION

Until putting into operation, the products must be stored in the manufacturer's packing, in rooms with an ambient temperature of -30 to +50 °C and a relative humidity not higher than 98% at 25° C in compliance with storage conditions as per GOST 15150-69.

Product transportation conditions must comply with group C as per GOST 23216-78 in terms of exposure to mechanical factors, and Ж2 as per GOST 15150-69 in terms of exposure to climatic factors.

9. WARRANTY LIABILITIES

The manufacturer, ETC PROMIX LLC, warrants conformity of the mechanism Promix-AD.KM.01 to requirements of current Technical Specifications provided that transportation, storage, installation and operation rules established in this Manual are followed.

The warranted operation period is 12 months from the date of sale but not longer than 18 months from the day of acceptance by the manufacturer's QCD.

Within the period of warranty, ETC PROMIX LLC undertakes to repair defective products free of charge. Expenses for transporting the product to the place of repair and back will be borne by the Buyer.

Warranty liabilities do not cover any defects and damages caused by:

- Improper maintenance by the Buyer;
- Use of the product under conditions that do not comply with the operation requirements;
- Mechanical damages or disassembly/modification of the products by the Buyer;
- Non-observance of the transportation and storage rules.

Faulty products are accepted for repair only as a complete set, on the obligatory condition that factory labels are retained on the product body.

On expiration of the warranty service period, the manufacturer provides after-warranty service on a contractual basis.

To improve product quality the manufacturing plant reserves the right to make modifications to the product design without prior notice.

10. ACCEPTANCE AND PACKING CERTIFICATE

The mechanism Promix-AD.KM.01 in quantity of ____ pieces (1 pc. by default) bearing the manufacturing date and QCD mark on the body, was manufactured and accepted in compliance with Specifications, obligatory requirements of state standards and current technical documentation, recognized as fit for operation and packed by ETC PROMIX LLC.

PROMIX Engineering and Technical Center LLC
Russia, 214030, Smolensk, Krasninskoye sh., 35, lit. A
Phone: (4812) 619-330
www.promix-center.ru
vk.com/promixcenter
facebook.com/promixcenter
mail@promix-center.ru

